

Mini Pump Specifications

4-21-11

For the pump only

EZee NuPulse Mini Pump Systems recommended use:

1/4hp Mini Pump is for one NuPulse Bucket Unit up to two Goat Claws.

3/4hp Mini Pump is for one or two NuPulse Bucket Units up to two Cow Claws or up to four Goat Claws on two NuPulse Buckets.

Brand: GAST 23 SERIES OILESS VACUUM PUMP

Manufacture Model # 0523-101Q-SG588DX (1/4HP Mini Pump)

Manufacture Model #1023-101Q-G608NGX (3/4 HP Mini Pump)

PRODUCT FEATURES

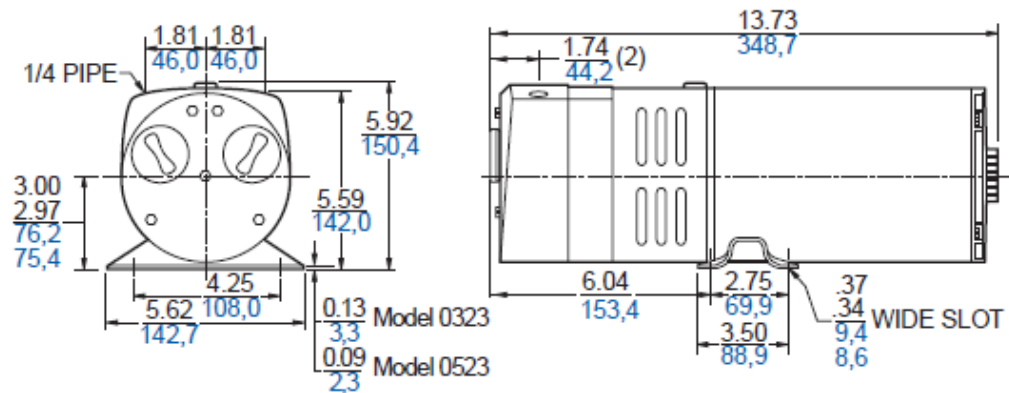
- Oilless operation
- Motor mounted
- Rugged construction/low maintenance
- Essentially pulse-free service
- Thermotector
- Internal filters
- External Silencer Muffler.

Product Use Criteria:

- Pump only clean, dry air.
- Operate at 32°F - 104°F (0°C - 40°C).
- Protect unit from dirt & moisture.
- Do not pump flammable or explosive gases or use in an atmosphere that contains such gases.
- Protect all surrounding items from exhaust air. This exhaust air can become very hot.
- Corrosive gases and particulate material will damage unit. Water vapor, oil-based contaminants or other liquids must be filtered out.
- Consult your Gast Distributor before using at high altitudes.
- Oil-Less rotary-vanes require NO lubrication.
- Sealed bearings are grease packed.
- Use of petroleum or hydrocarbon products will reduce carbon-vane service life

MODEL 0523 SERIES (1/4HP Mini Pump)

26" HG MAX. VAC., 4.5 CFM OPEN FLOW
10 PSI MAX. PRESSURE, 4.5 CFM OPEN FLOW



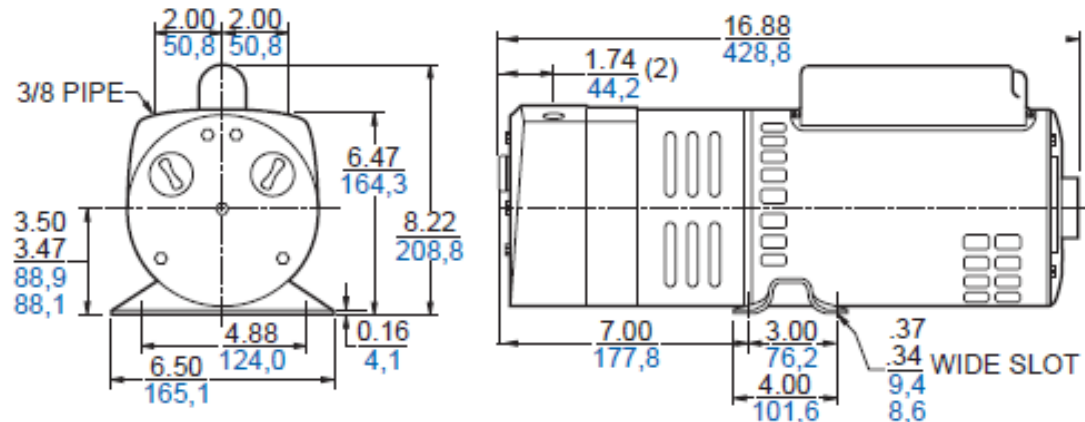
Model Number	Electric Motor AC Input	RPM 60 cycle	RPM 50 cycle	HP	kW	Net Wt. lbs.	Net Wt. kg
0523-101Q-SG588DX (1/4HP)	100-110/220-240 100-115/208-230 50/60-1ph	1725	1425	1/4	0,19	30	13,5
1023-101Q-G608NGX (3/4HP)	100-110/220-240 100-115/208-230 50/60-1ph	1725	1425	3/4	0,56	47	21,2

General information

- **Clearances of Rotor for vanes:** Top: .003" Ends: .002
- **Vane Life:** 5,000-15,000 hours depending upon application (NuPulse app. 10000)
- **Model numbers ending in "X"** have automatic thermal protectors which protect the motor by shutting the motor off if it overheats. the motor will automatically restart once the motor has cooled. (Standard on NuPulse Mini Pumps)

MODEL 1023 SERIES (3/4 HP Mini Pump)

26" HG MAX. VAC., 10.0 CFM OPEN FLOW
10 PSI MAX. PRESSURE, 10.0 CFM OPEN FLOW



EZee NuPulse Vacuum CFM Performance Test

A Mercury Gage was used for accuracy in the CFM test. The recovery test was done using one NuPulse Goat Claw, Bucket, S.S. Reserve Canister, Relief valve and standard length hoses for a Mini Pump Unit. Listed below are my results.

Gast 1/4 HP

At 2 CFM it produced 14.9" hg vacuum American Standard.

At 4 CFM it produced 5.9" hg vacuum American Standard.

The following test done at 11" hg of vacuum.

With both claws liners completely open and sucking in air then quickly plugged, took 12 seconds to recover to set vacuum level.

Gast 3/4 HP

At 4 CFM it produced 15.8" hg vacuum American Standard.

At 6 CFM it produced 11.8" hg vacuum American Standard.

The following test done at 11" hg of vacuum.

With both claws liners completely open and sucking in air then quickly plugged, took 4 seconds to recover to set vacuum level.